

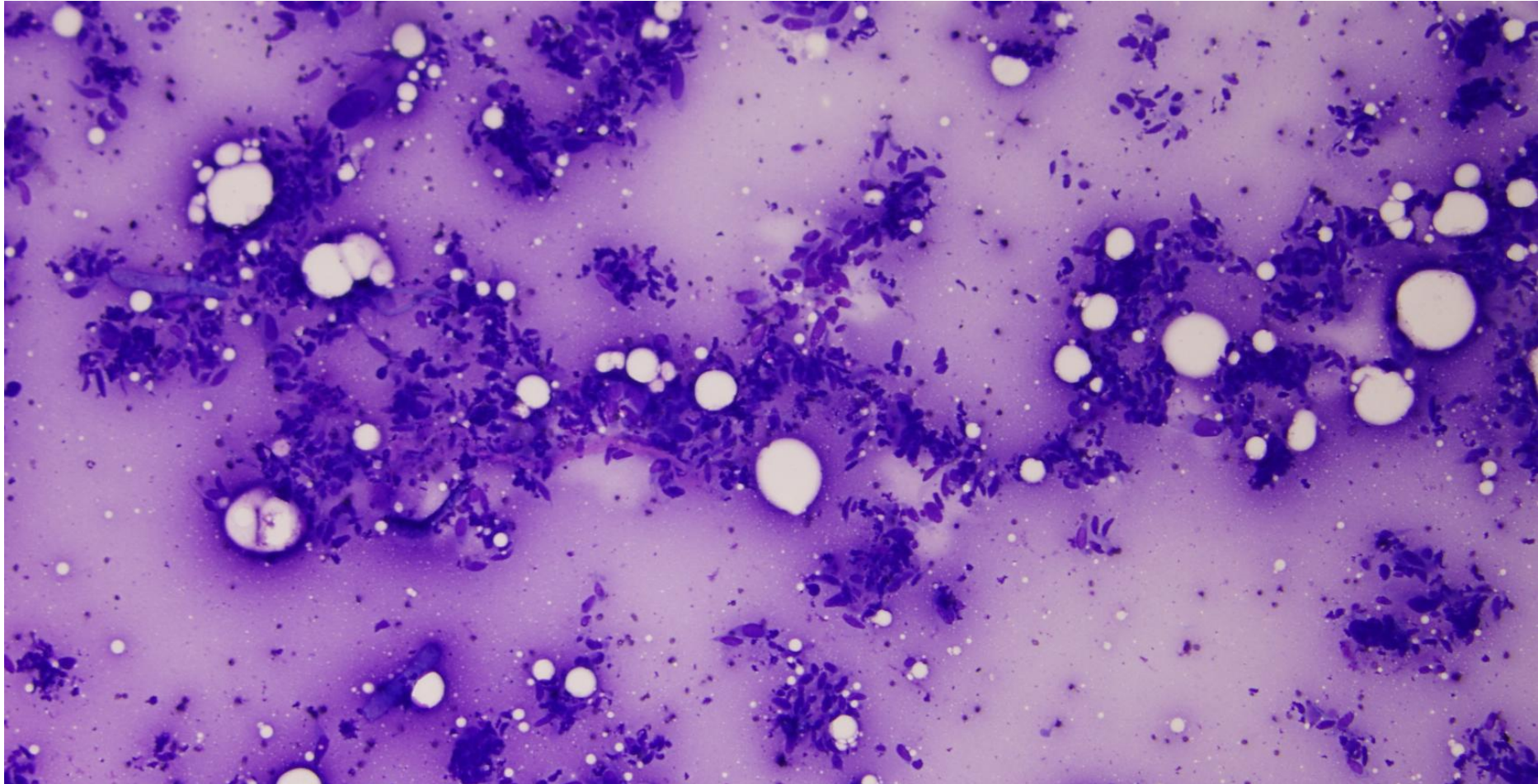
Interesting Case Conference

11/26/2012

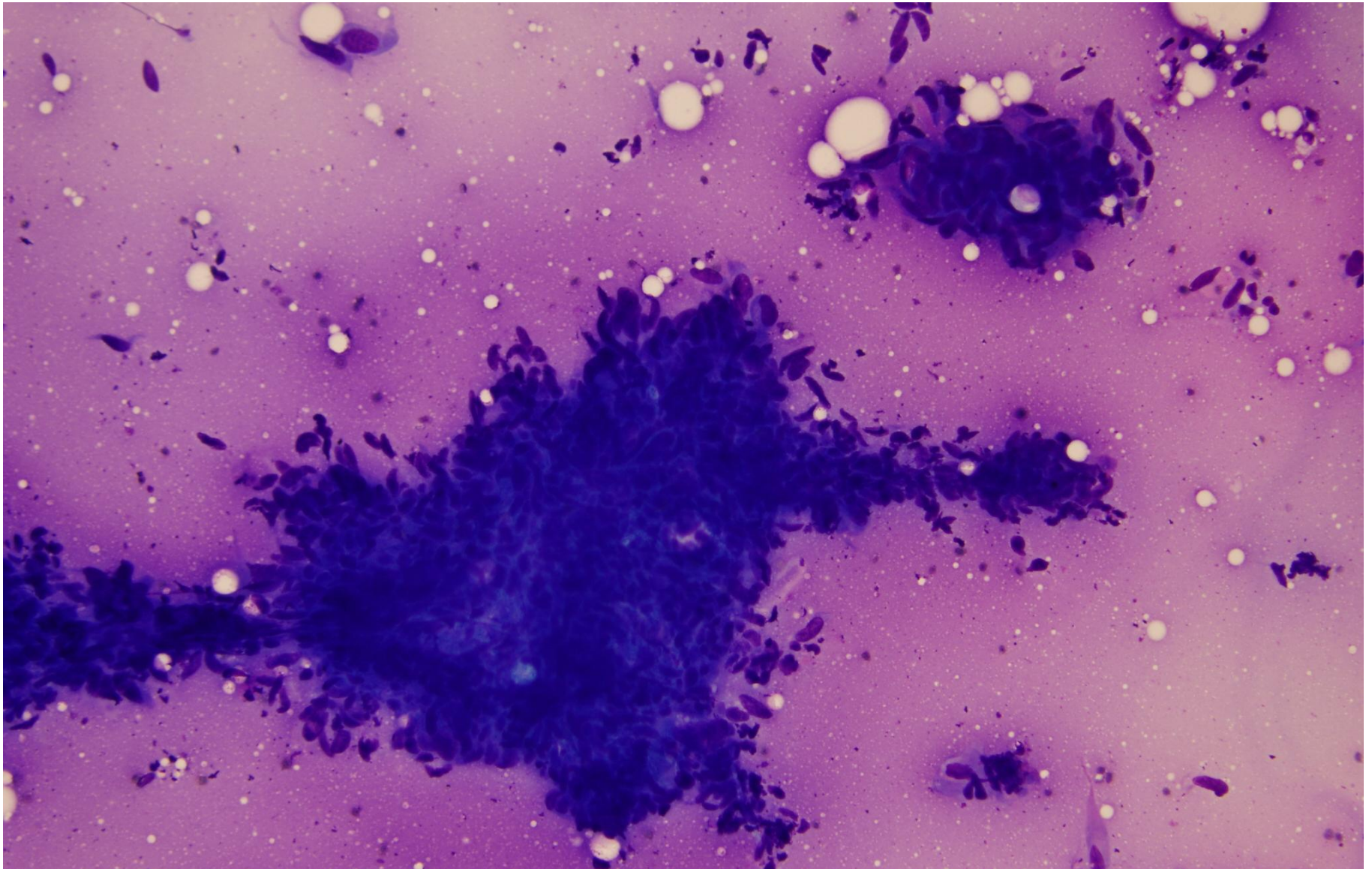
HISTORY & PHYSICAL EXAM

- 82 year old Caucasian male with history of _____.
- 1.5 cm superficial, mobile perineal nodule

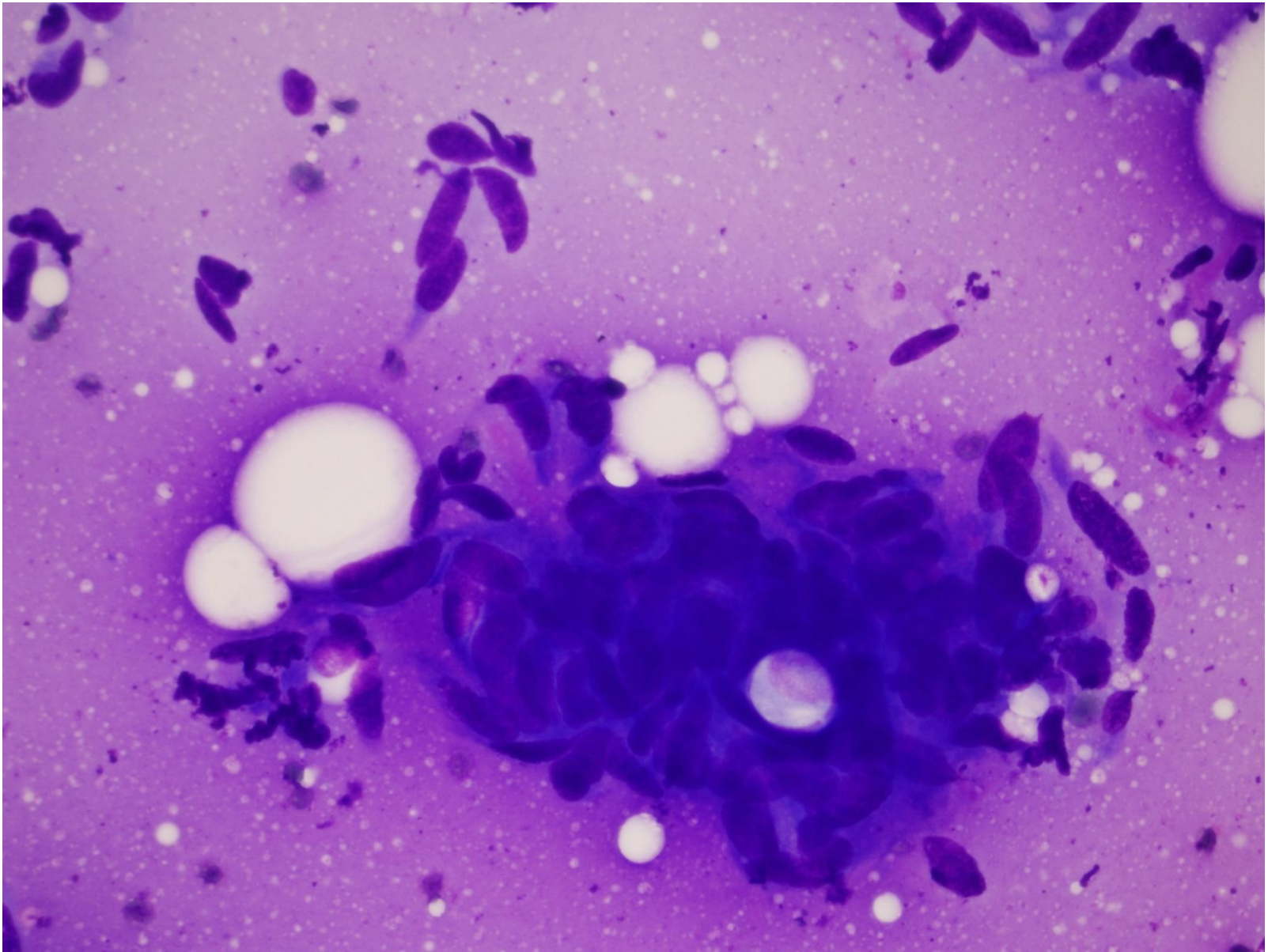
Diff-Quik: Low Power
Very cellular; predominantly spindle cells



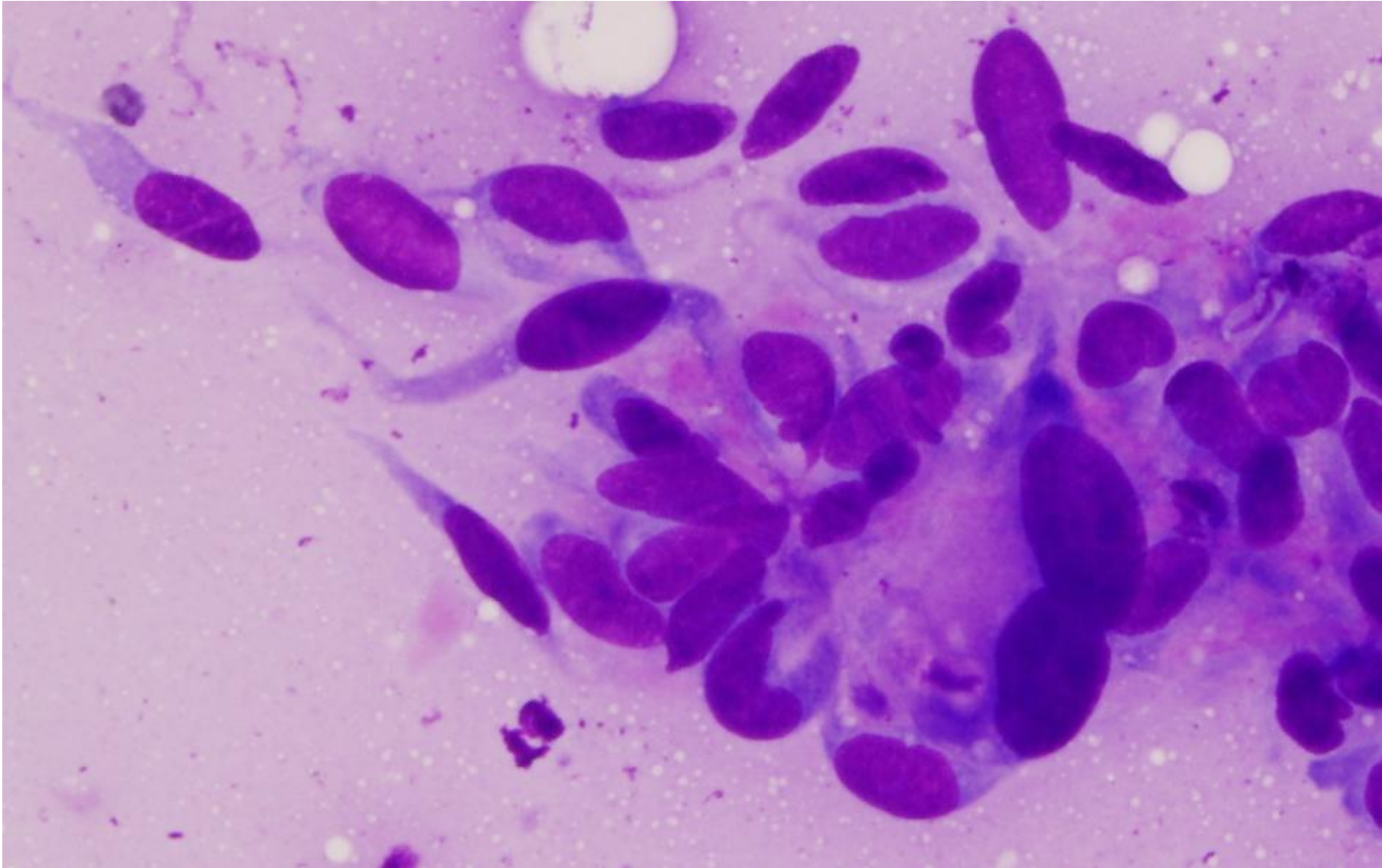
Diff-Quik: Clusters and single cells



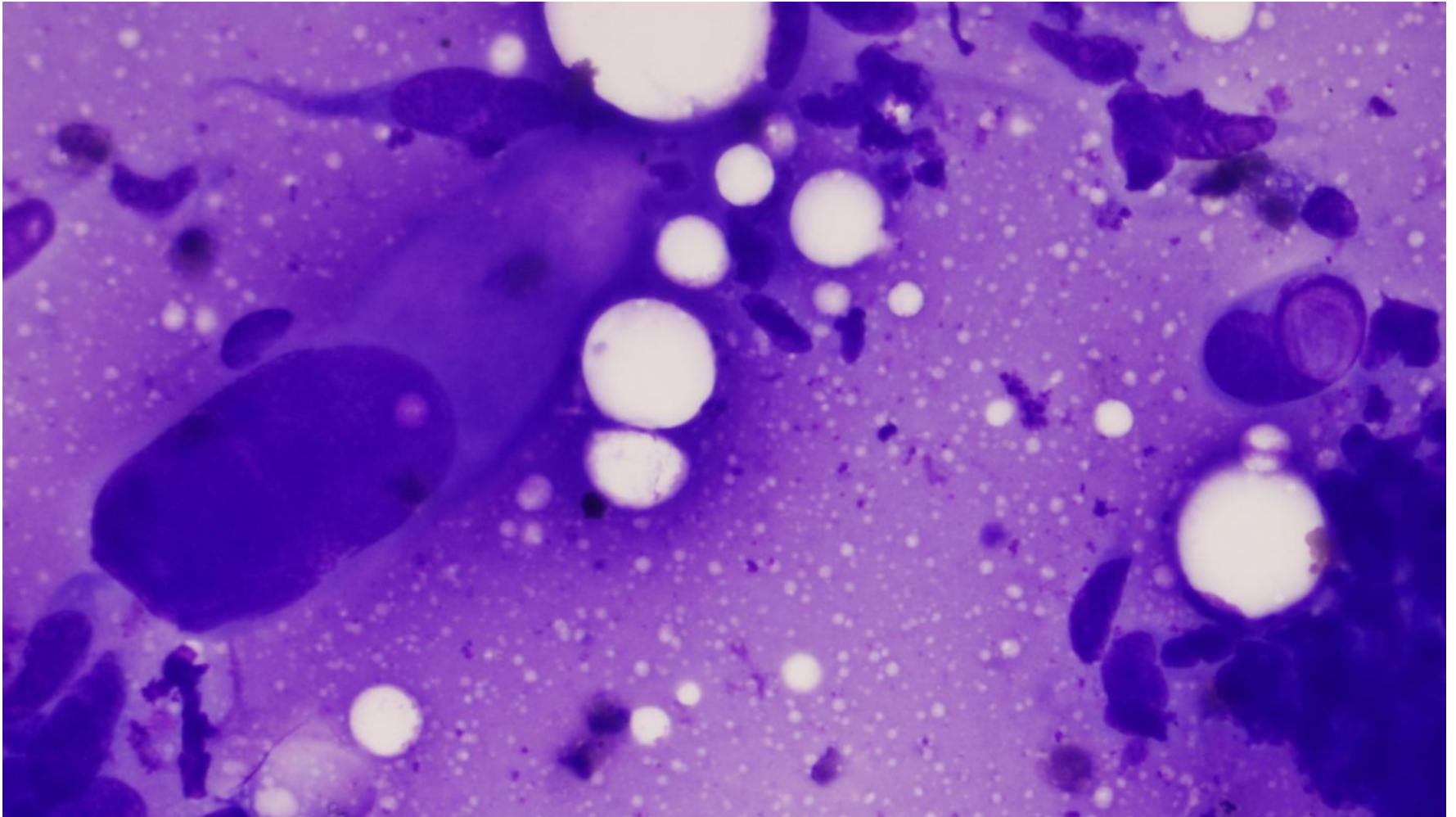
Diff-Quik: Gland-like formations



Diff-Quik: Spindled cells with nuclear atypia/pleomorphism



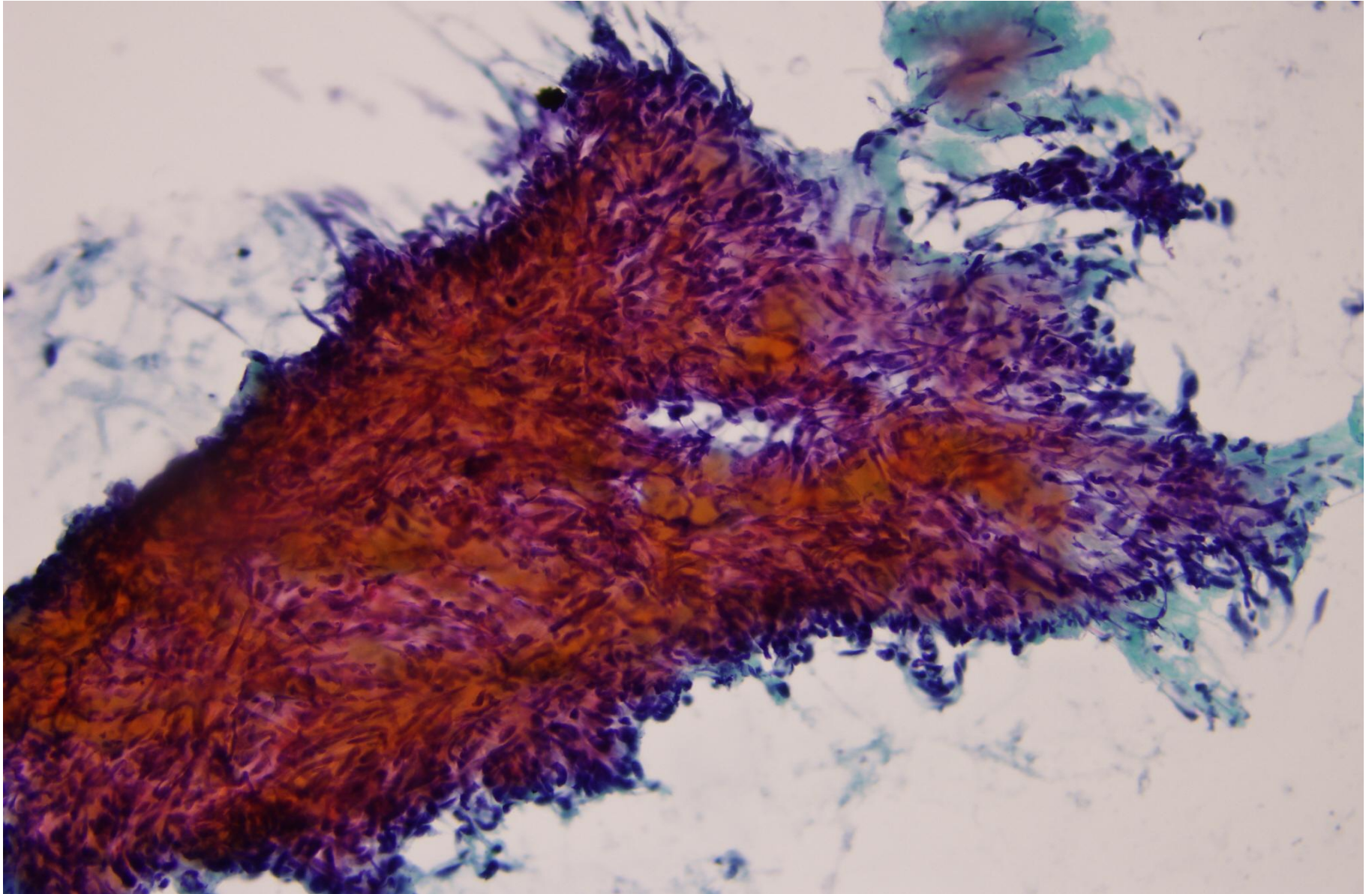
Diff-Quik: Focal marked atypia; nuclear pseudo-inclusion



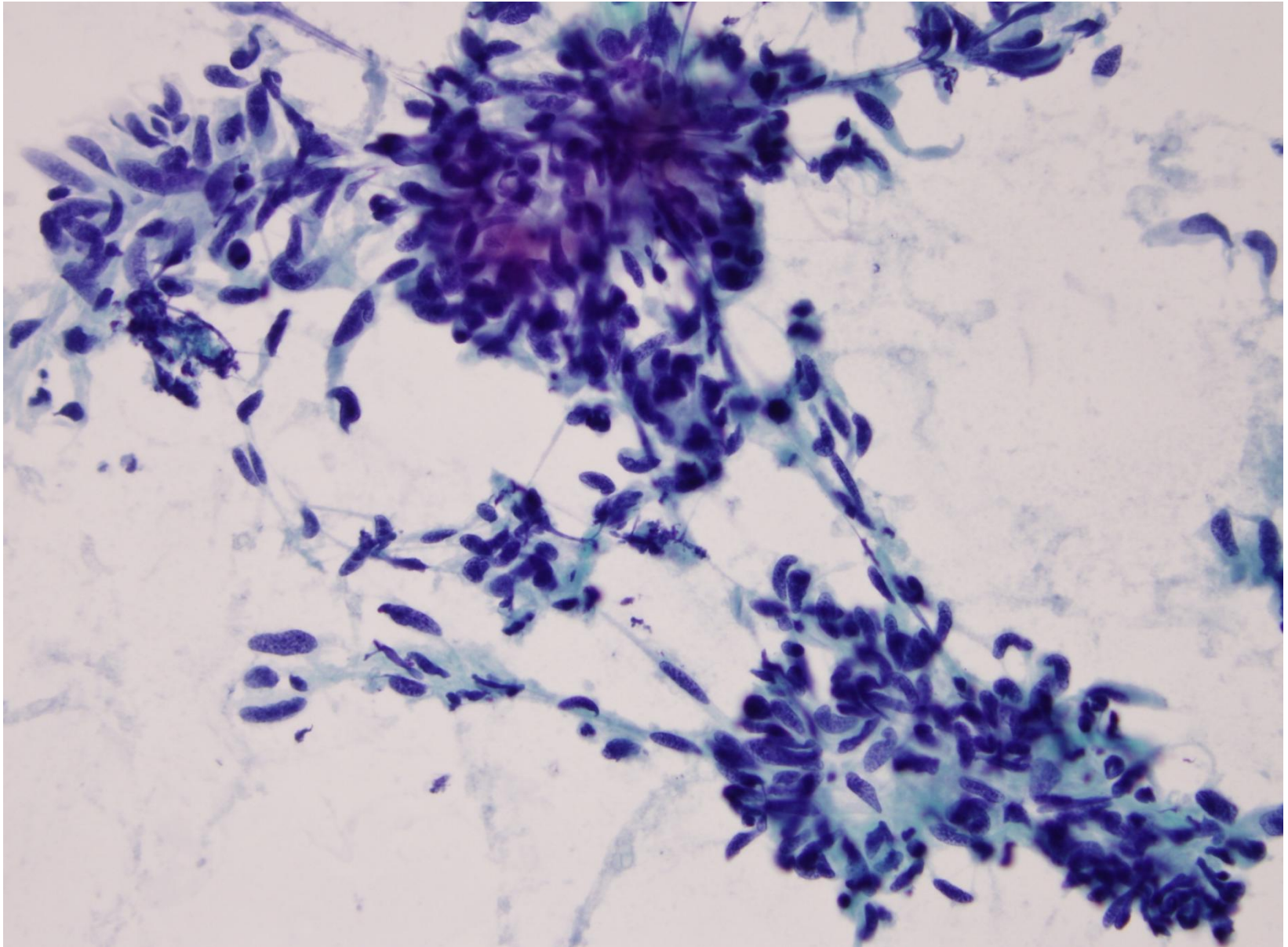
Differential Diagnosis

- Spindle cell neoplasm, including sarcomas.
- Sarcomatoid carcinoma
- Adenocarcinoma
- Carcinosarcoma
- Melanoma

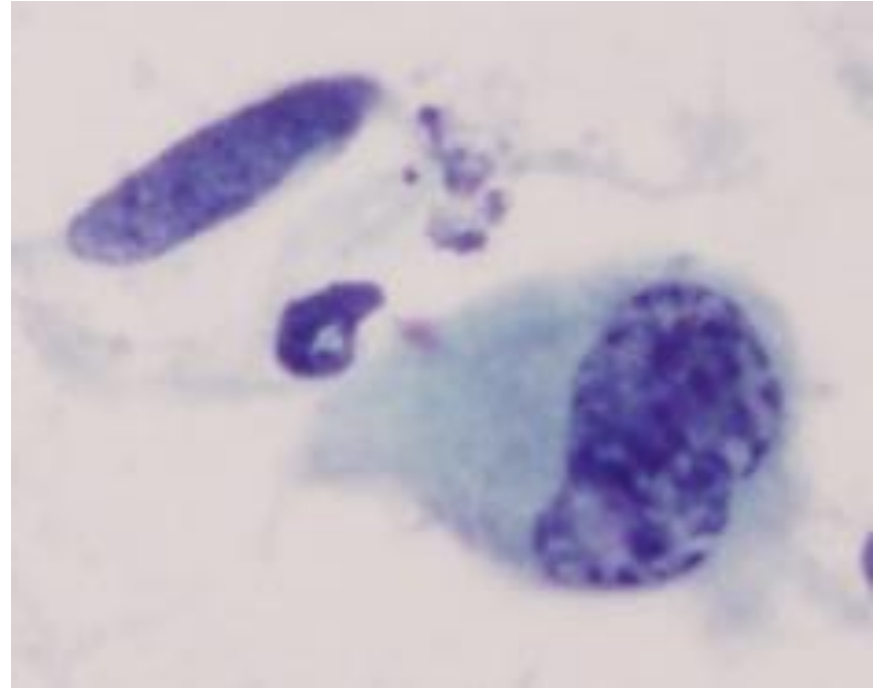
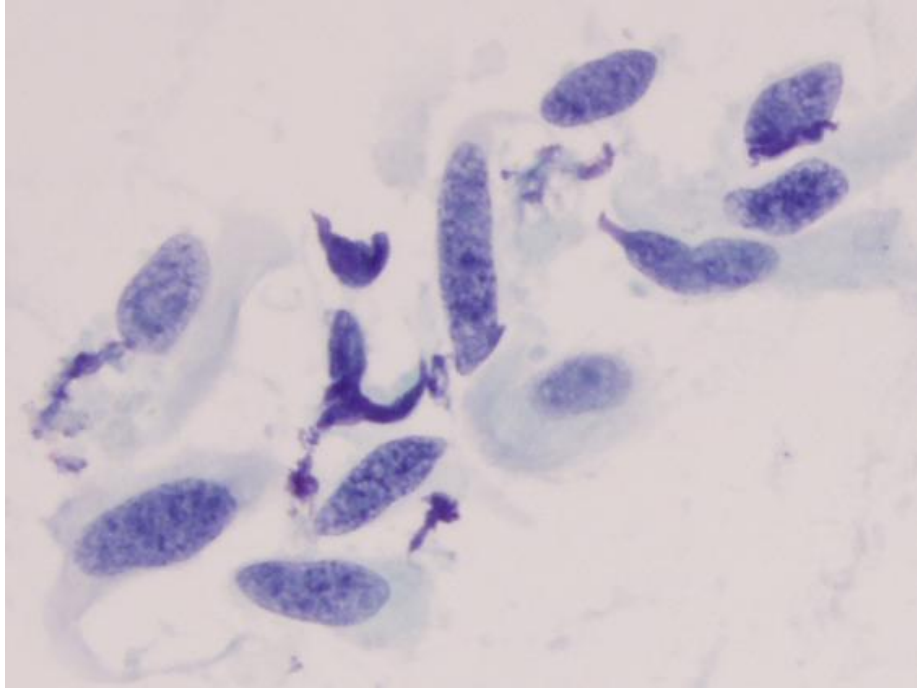
Pap stain



Pap stain



Pap stain



FINAL DIAGNOSIS

- Perineal nodule, FNA:
 - Positive for spindle cell neoplasm, consistent with patient's known history of melanoma.