

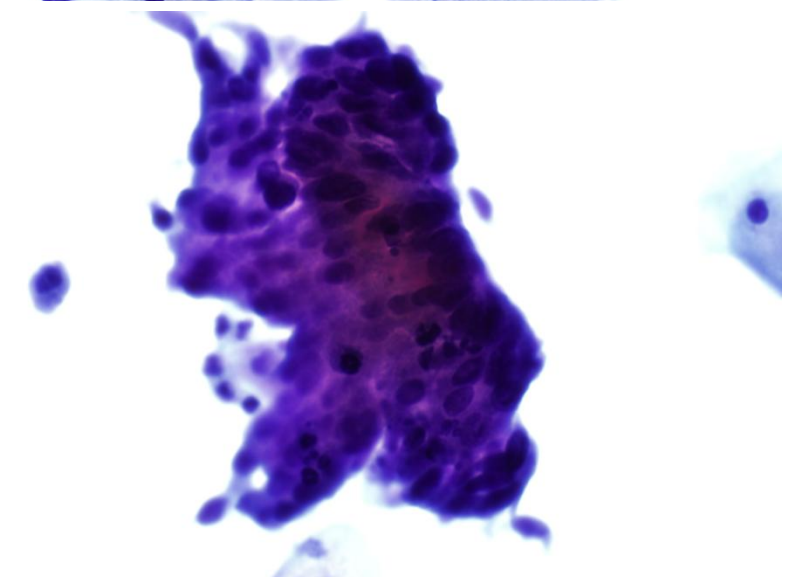
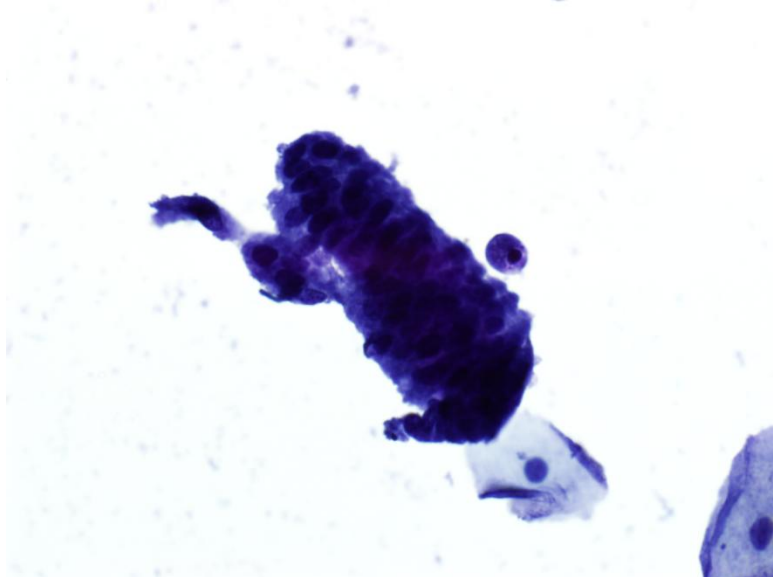
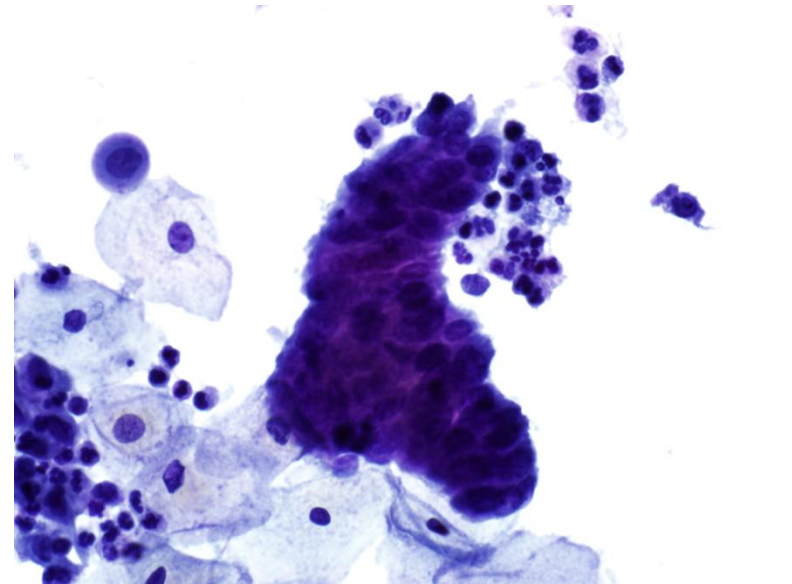
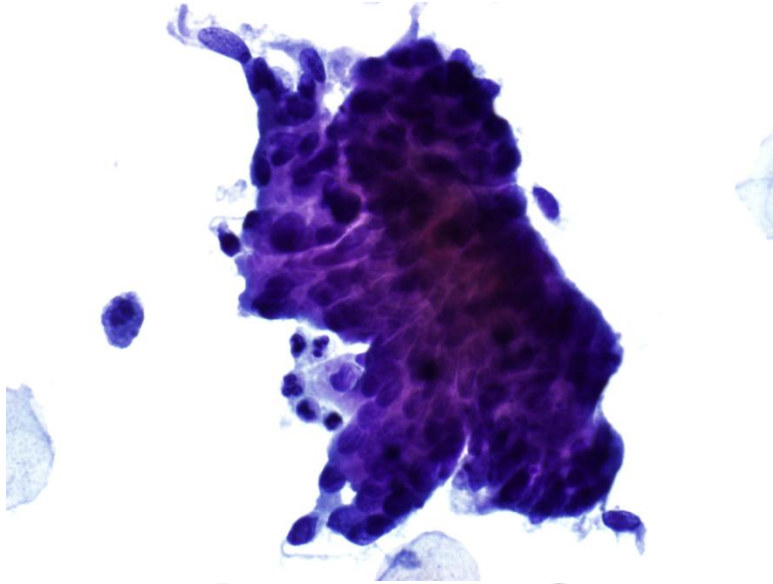
Interesting Case

April 1, 2013

History

- 51 year old woman with no remarkable previous medical history.
- Routine Pap test.

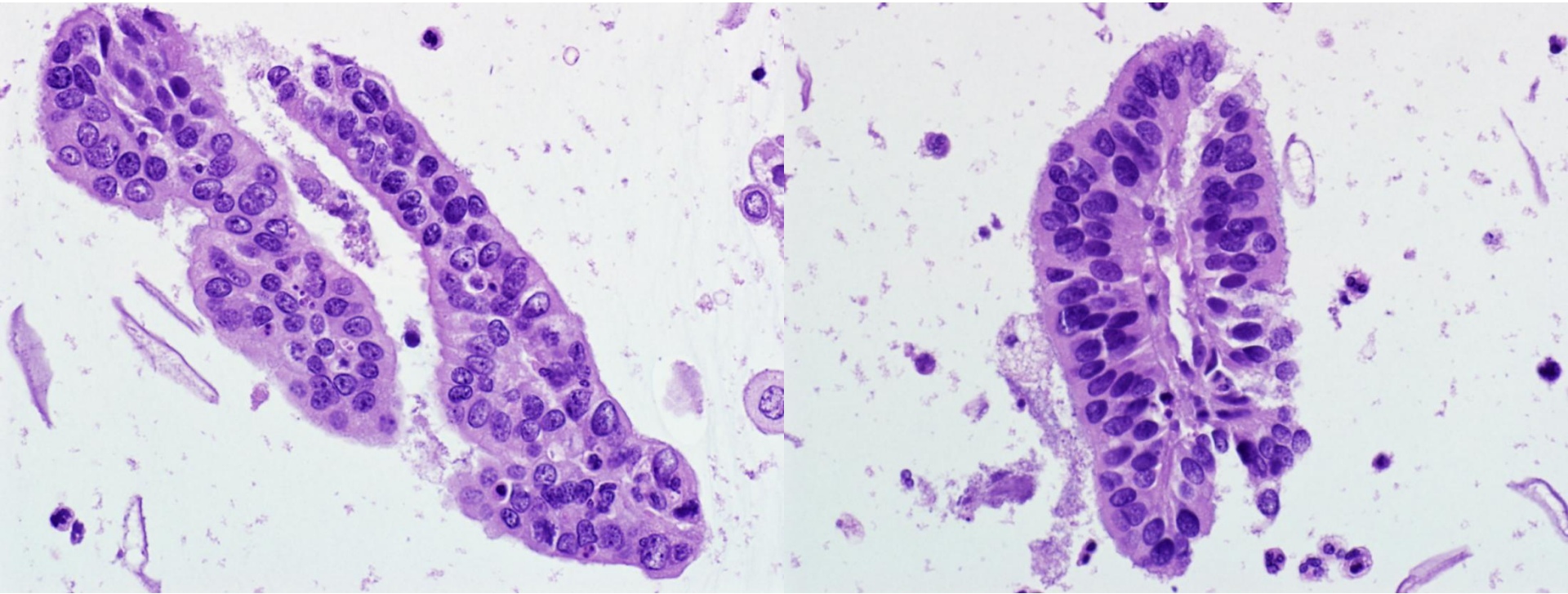
Atypical endocervical cells with nuclear stratification, coarse chromatin, and mitotic activity (lower right)



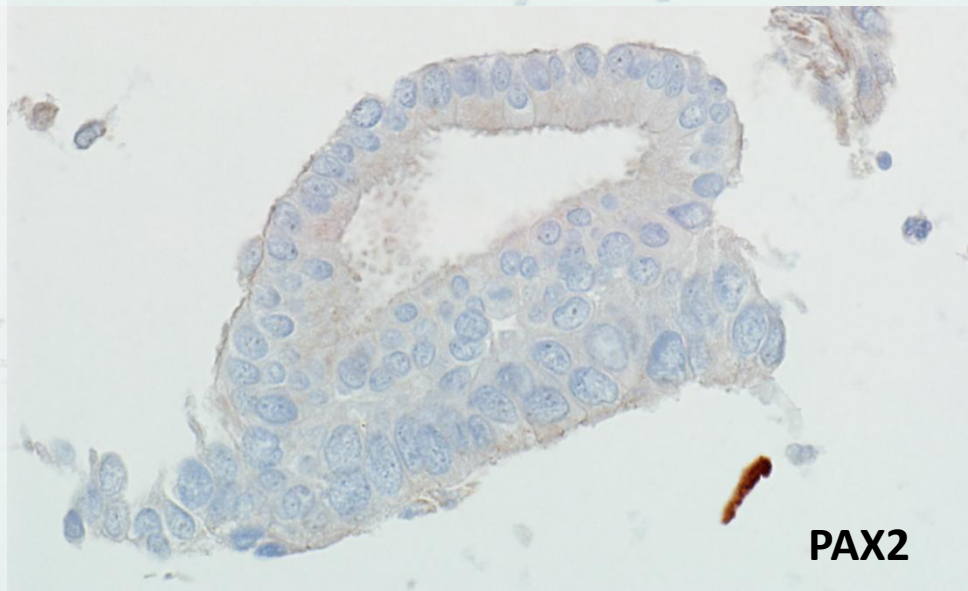
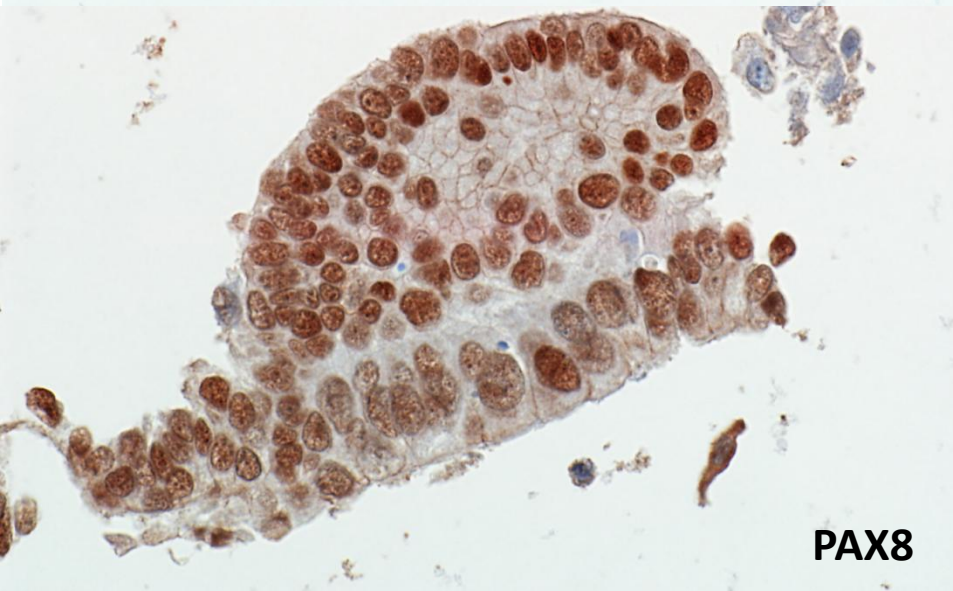
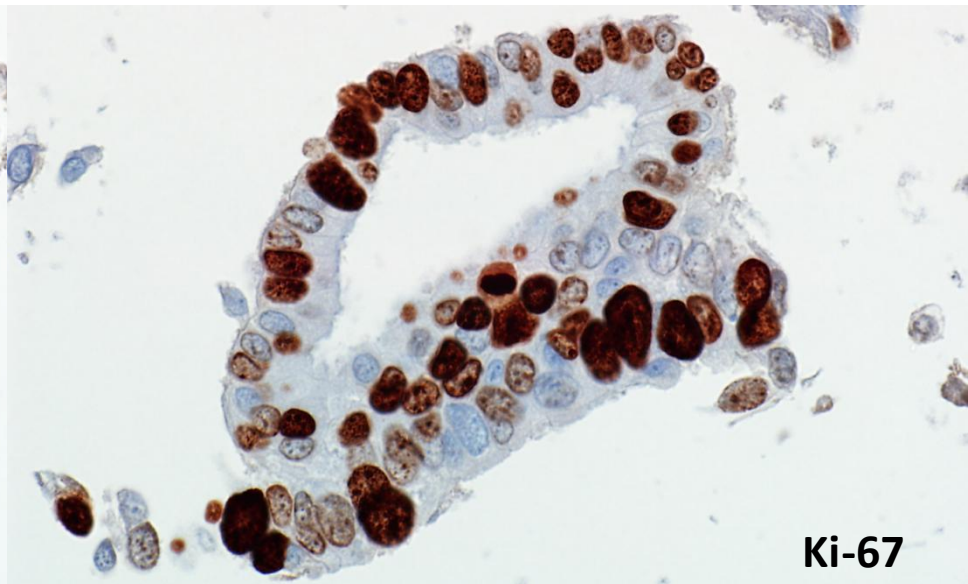
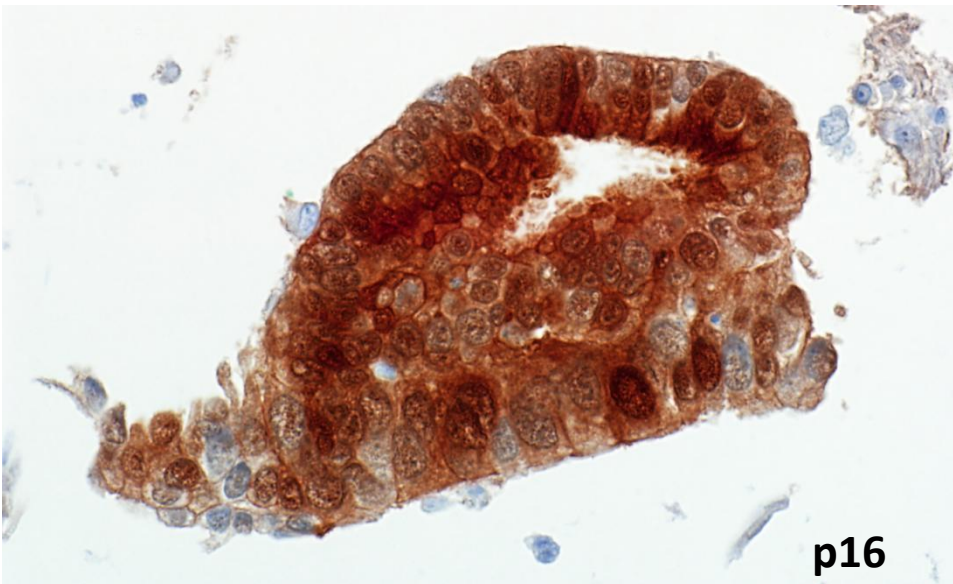
Interpretation – How far would you go?

- Atypical glandular cells, NOS?
- Atypical glandular cells, favor neoplastic?
- Atypical endocervical cells, NOS?
- Atypical endocervical cells, favor neoplastic?
- Endocervical adenocarcinoma in-situ?

Cell Block Preparation



Immunohistochemistry



Diagnosis

- Endocervical adenocarcinoma in-situ.
- Lesson: Cell block preparations can be helpful in evaluating glandular lesions of the cervix.

International Journal of Gynecological Pathology
00:1-6, Lippincott Williams & Wilkins, Baltimore
© 2012 International Society of Gynecological Pathologists

Original Article

PAX8 and PAX2 Expression in Endocervical Adenocarcinoma
In Situ and High-Grade Squamous Dysplasia

Abhishek Shukla, M.D., Dafydd Thomas, M.D., Ph.D., and Michael H. Roh, M.D., Ph.D.