



DEPARTMENT OF PATHOLOGY

UNIVERSITY OF MICHIGAN
HEALTH SYSTEM

13th Annual Pathology Research Symposium

Featuring keynote speaker

Jennifer Lippincott-Schwartz, Ph.D.



National Institute of Child Health
and Human Development

**"Navigating the cellular
landscape with new optical
probes, imaging strategies
and technical innovations"**

Friday, November 14, 2014

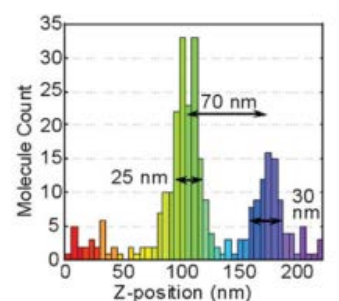
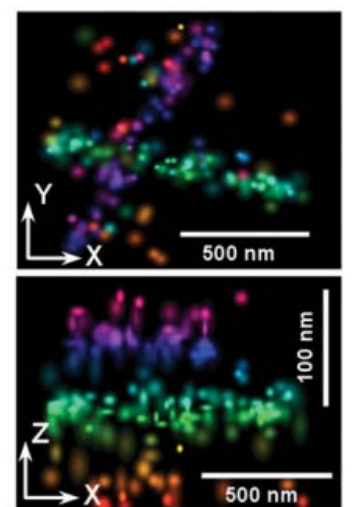
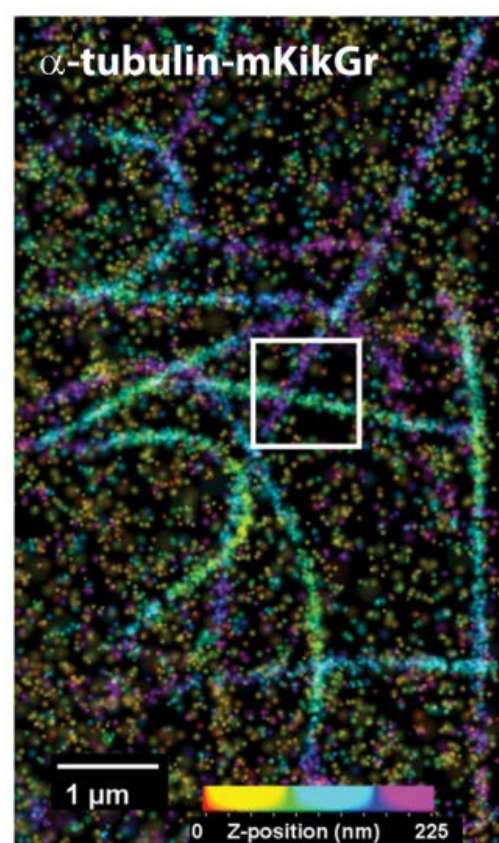
9:20 a.m.-4:30 p.m.

*Kahn Auditorium, A. Alfred Taubman
Biomedical Science Research Building*

9:20 a.m.: Departmental talks begin

12:15 p.m.: Lunch and poster session

1:30 p.m.: Keynote presentation



For full schedule or to register a poster (deadline Nov. 3) visit

www.pathology.med.umich.edu/symposium

Questions? Email Laura Labut at laszczem@umich.edu